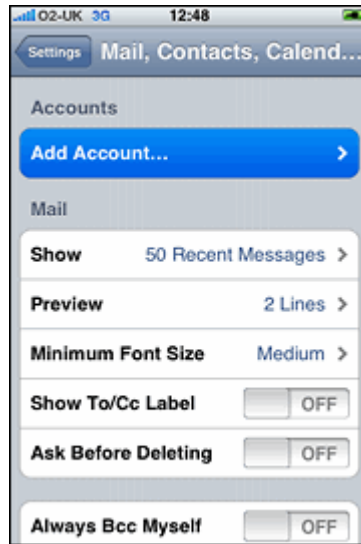


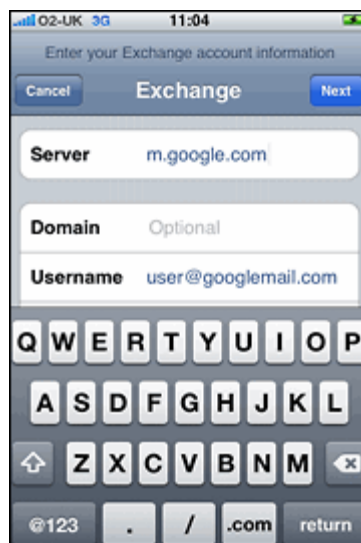
Adding Google Calendar to your iPhone

1. Open the **Settings** application on your device's home screen.
2. Open **Mail, Contacts, Calendars**.
3. Tap **Add Account...**
4. Select **Microsoft Exchange**. OS 4.0+ now allows multiple Exchange accounts. However, if you're on a device that doesn't let you add a second account, you could also [use CalDAV](#) to sync Google Calendar and [IMAP](#) to sync Gmail.



Enter Account Info

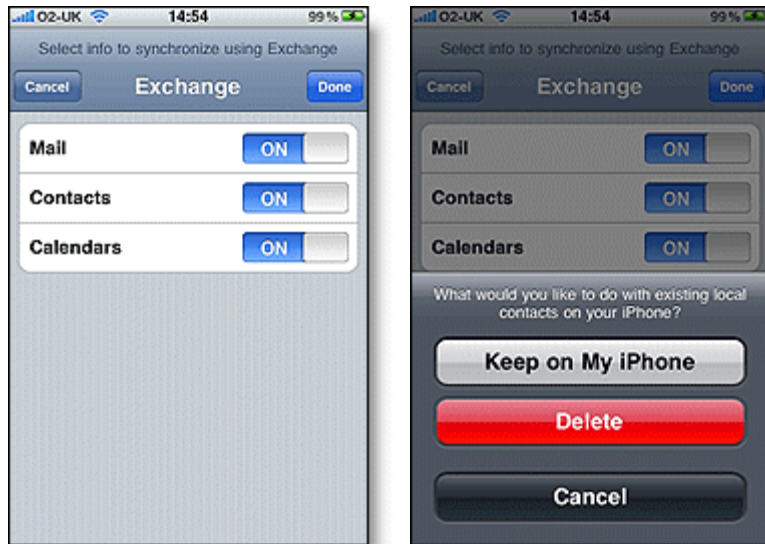
5. In the **Email** field, enter your full Google Account email address. If you use an @googlemail.com address, you may see an "Unable to verify certificate" warning when you proceed to the next step.
6. Leave the **Domain** field blank.
7. Enter your full Google Account email address as the **Username**.
8. Enter your Google Account password as the **Password**.
9. Tap **Next** at the top of your screen.
- 9a. Choose **Cancel** if the **Unable to Verify Certificate** dialog appears.
10. When the new **Server** field appears, enter **m.google.com**.
11. Press **Next** at the top of your screen again.



12. Select the Google services (Mail, Calendar, and Contacts) you want to sync.

13. Unless you want to delete all the existing Contacts and Calendars on your phone, select the **Keep on my iPhone** option when prompted. This will also allow you to keep syncing with your computer via iTunes.

If you want to sync only the **My Contacts** group, you must choose to **Delete Existing Contacts** during the Google Sync install when prompted. If you choose to keep existing contacts, it will sync the contents of the "All Contacts" group instead. If there are no contacts on your phone, the latter will happen -- the contents of your **All Contacts** group will be synced.



You've set up Google Sync! Synchronization will begin automatically if you have Push enabled on your device. You can also open the Mail, Calendar or Contacts app and wait a few seconds to start a sync

Choosing which Calendars to sync

1. Open the Safari browser on your device and go to <http://m.google.com/sync>.
2. Sign in with your account and select your device from the list of devices you've set up for Google Sync.
3. Bookmark this page so you can return to it easily.

